

# PowerBuilder.NET with SCC

Usage Note

Reed Shilts 17-Feb-2011 Initial version

---

## Question:

What happens when the library (PBL) is not checked out, and I try "File → New" ?  
Or more generally, how does "File→ New" interact with Source Code Control systems...

## Short Answer:

The "File → New" action may fail, depending on how "automatic checkout" is set.

Note:

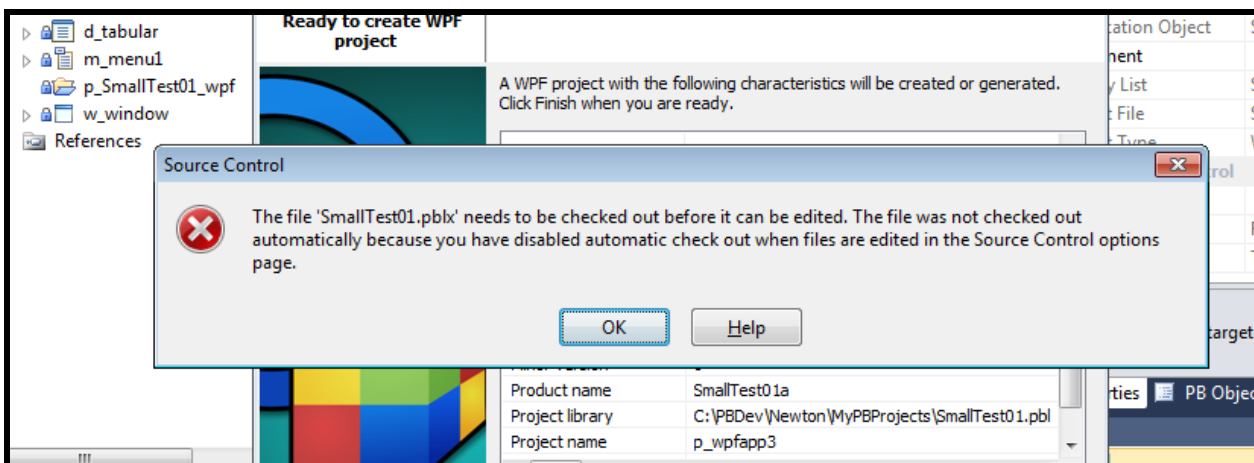
- a) This example is using PowerBuilder.NET 12.5, but everything should be the same for 12.0.
- b) The source code control system happens to be Microsoft's Team Foundation Server (TFS).

## Case 1 – No Automatic Checkouts

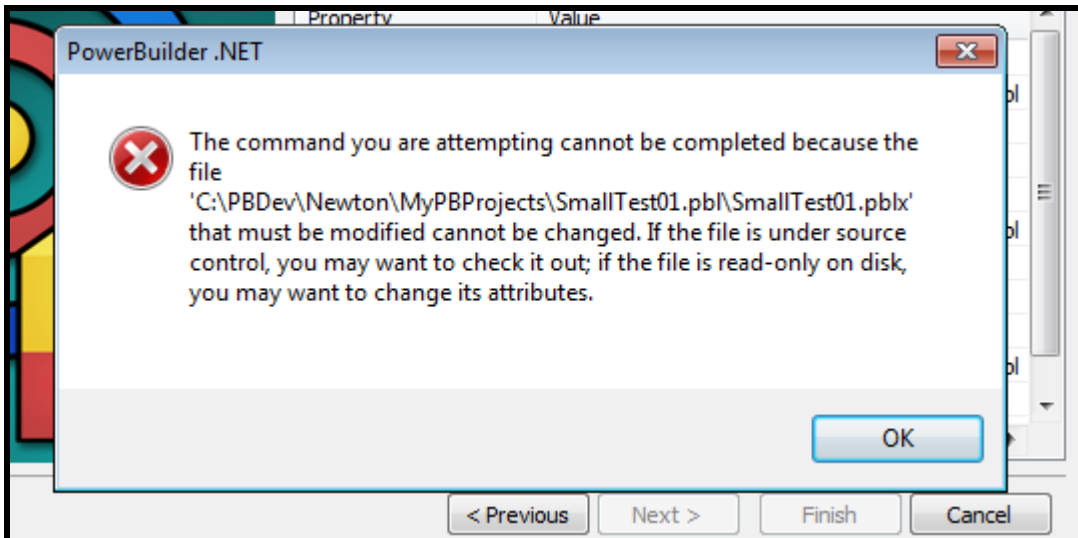
The "Tools → Options → Source Control → Environment" page has the "On Edit" value set to "Do nothing" (as opposed to "Check out automatically" or even "Prompt for checkout").

When the "File → New" wizard is finished gathering information, it will then try to create the object in the PBL. When it requests permission from the library manager, it will fail because the file is read only.

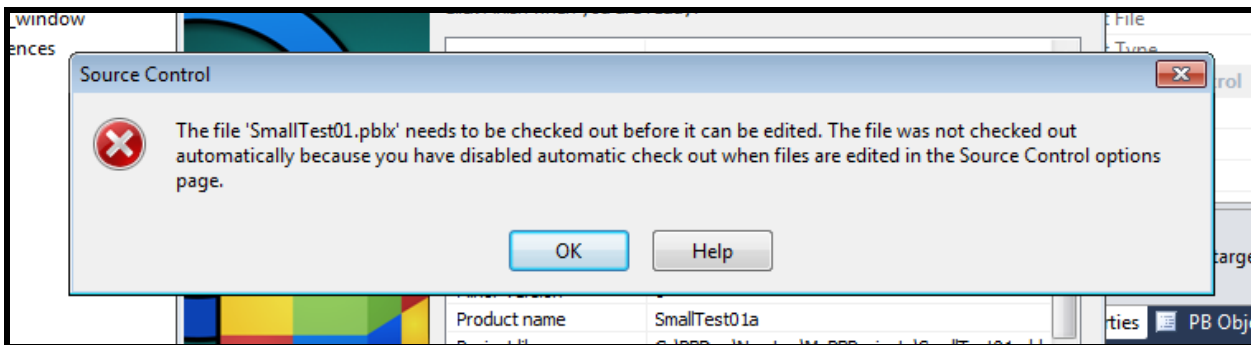
Fortunately, the message boxes are quite clear what is happening.



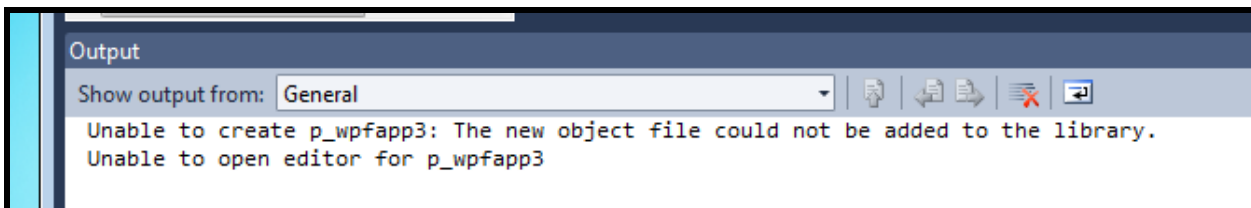
Then the message...



And finally the message box...



The output window contains the statement:

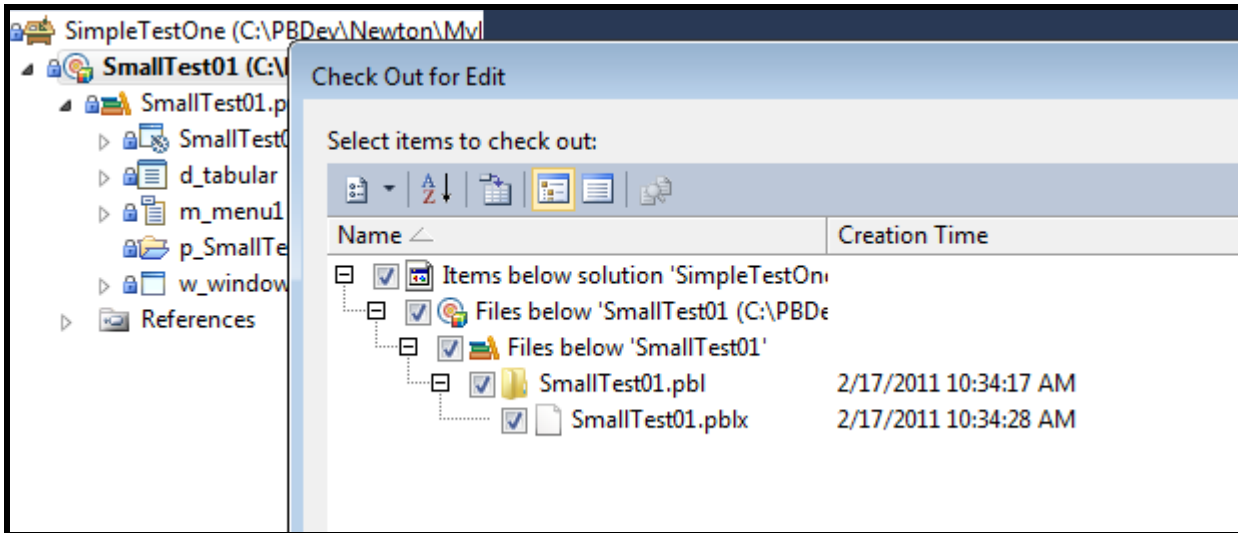


A bit verbose, but quite clear that things failed, and more importantly, the reason for the failure.

## Case 2 – Prompt for Checkout Enabled

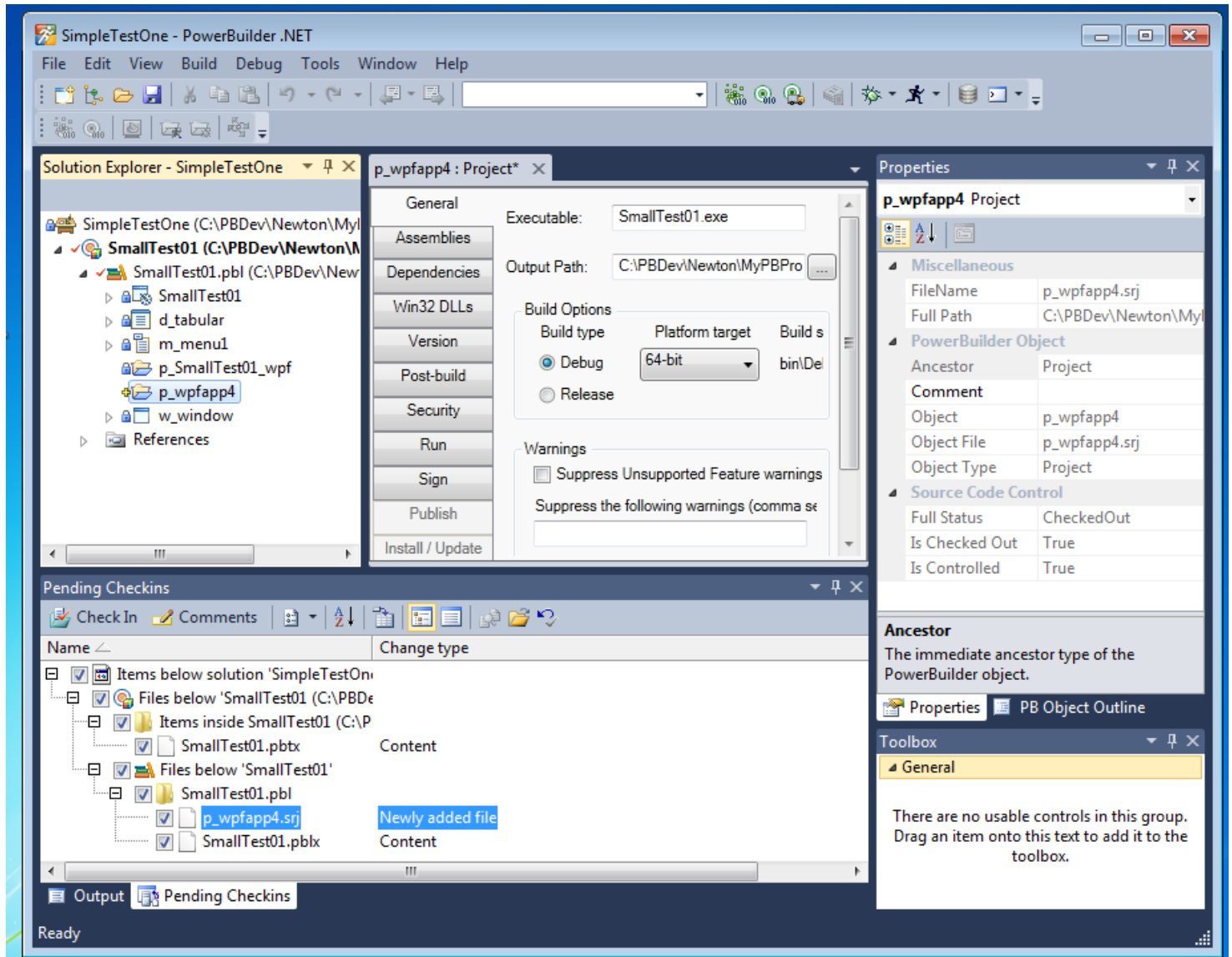
The "Tools → Options → Source Control → Environment" page has the "On Edit" value set to "Prompt for checkout" (as opposed to automatic checkout)

After running through the wizard, the project file which controls the PBL needs to be checked out (the XML based PBLX file):



And, depending on the object being edited, the project file which controls the PB Target (the PBTX file) may need to be also checked out. The end result is that the new PowerBuilder project object is ready for editing and placed on the "Pending Checkins" list.

The screen shot below (from PowerBuilder.NET 12.5) is a bit squished to show everything, but this does show all the main aspects.



### Case 3 - Automatic Checkout Enabled

This is the simplest case, the "Tools → Options → Source Control → Environment" page has the "On Edit" value set to "Automatic Checkout".

This case is the simplest because everything is checked out as you would expect. The PBL project file (the PBLX file), if needed the target's project file (the PBTX file), and the new file is put on the pending checkins list. Basically, you go straight to the final dialog in the above case with no questions asked.